

# Protecting Crowded Places Creating your Strategy Adjunct

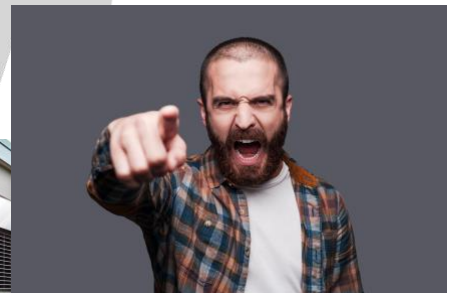
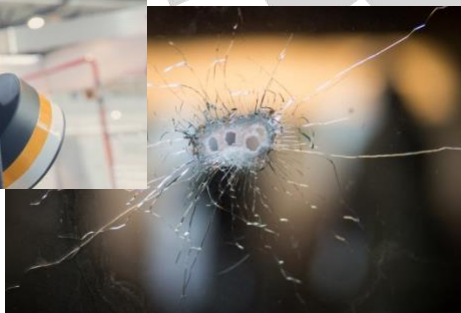


## Raising the Bar on New Zealand's **Safety**

Regardless whether you have completed a self-assessment or have engaged in a formal threat assessment, you must now document your learnings, strategies and mitigations. Creating this document can at times be a confounding prospect delving into an unfamiliar world of counter threat risk and mitigation.

S646 works with clients to create your adjunct consistent with business or event perimeters and applicable legislation making your world a safer place.

The Strategy Adjunct sits alongside and compliments existing Health and Safety policies and procedures negating a complete overhaul and rewrite.



## PROTECTING NEW ZEALANDS CROWDED PLACES FROM ATTACK:

The recently released suite of documents that complement the New Zealand Strategy can be found here: <https://www.police.govt.nz/advice-services/protecting-crowded-places-attack>

If you are the **owner or occupier** of a crowded place, and this can be an event, public venue, shopping mall, high rise building or any other place where people mass, you need to consider the following responsibilities:

- Assessing the risks and vulnerabilities of their crowded place
- Implementing appropriate mitigations for risks at their crowded place
- Keeping mitigations in proportion with the risks to their crowded place
- Monitoring the effectiveness of the mitigations
- Reviewing the mitigations at appropriate times.

You have a number of options available to you in assessing and mitigating, ranging from completing a **self-assessment** (found on the link above or from the downloads page at [S646.com](http://S646.com)) through to a **formal threat assessment**.

How far you go in assessing will be determined by the results of your self assessment.

Here's the tricky part, you must now place all your new knowledge into a concise document detailing **proportional mitigations** and who and how they will be implemented.

This can be a **daunting task**; counter threat work is a defined skillset best left to professionals. This is where S646 can help. **Let us** do what we do best, allowing you to operate a better **safer business**.

## YOUR COUNTER THREAT STRATEGY ADJUNCT:

Why an adjunct? Because it allows you to place your new strategy **alongside the existing Health and Safety System** without the need for a complete rewrite.

The adjunct will acknowledge all **business perimeters**, document systems, proportional mitigations and staff tasked with implementation.

Details are only provided on engaging S646 service, a brief summary of content is as follows:

- Legislation information and compliance
- Counter Threat Mitigations
- Critical Incident Team
- Control Structures
- Lockdown/Lock In/Lock Out/Shelter In place
- Medical Management
- Emergency Service Notification and Interaction
- Media Advisement
- Response and Evacuation Plans for all perceived threats
- Bomb Threat Checklist and how to complete

The Adjunct is completed by implementation and scenario training to **ensure staff are familiar** with how and when to activate contents.

**S646** is operated by Warwick Hall, Warwick is recognised as a global risk professional having worked in a number of countries. He has served as a professional soldier and as a Police constable (five years serving in a covert unit).

Holding Diploma's in Police Studies and Health and Safety Management, he is a certified Lead Auditor of Safety Systems and is currently studying Terrorism at St Andrew's University.

**Section 646 offers a range of services inclusive of threat assessments, target hardening, document creation, penetration testing and onsite threat management**

---

**SEE SOMETHING SAY SOMETHING  
VIGILANCE REMAINS OUR GREATEST DEFENCE – APATHY OUR GREATEST ENEMY**

S646 offers counter-threat services in the interest of encouraging and increasing safety. S646 does not represent or certify in any way the actual safety of any venue or infrastructure and assumes no responsibility as to the safety of any person. [S646.com](http://S646.com) – Counter Threat